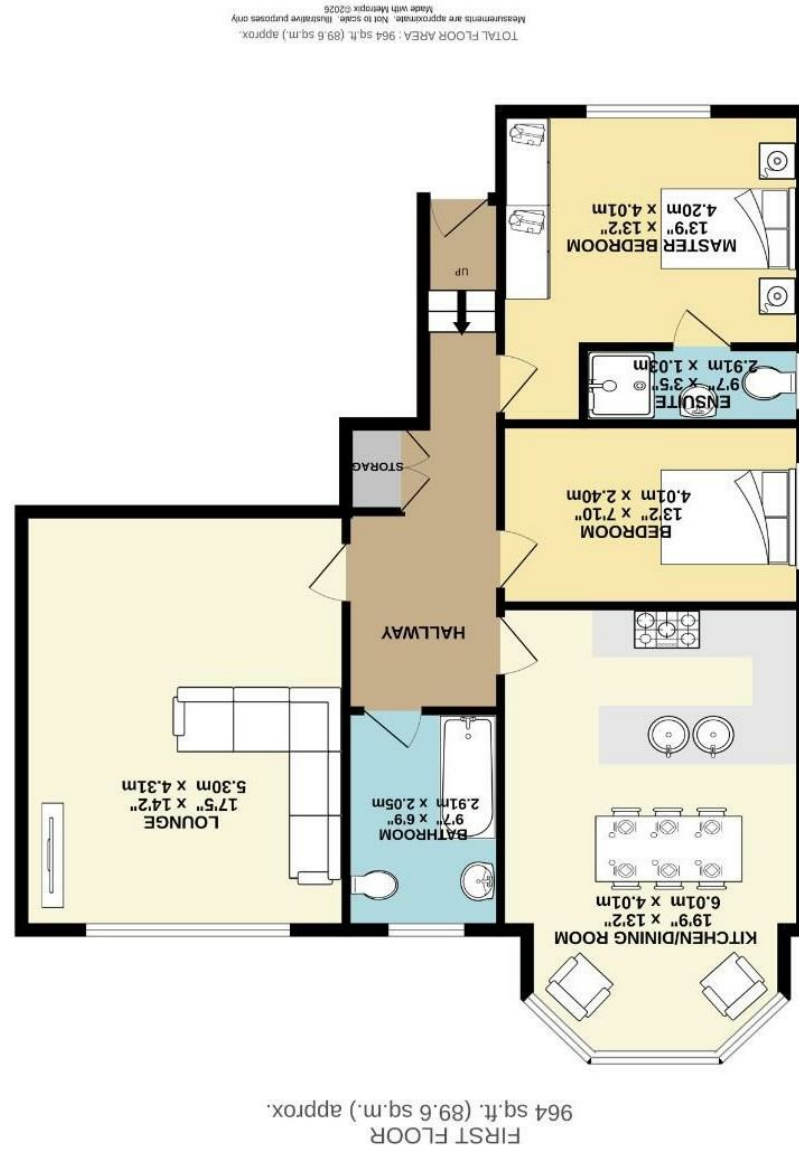


Fishwick nor the vendor or lessor accept any responsibility in respect of these particulars, which are not intended to be statements or representations of fact and any intending purchaser or lessee must satisfy himself by inspection or otherwise as to the correctness of each of the statements contained in these particulars. Any floorplans on this brochure are for illustrative purposes only and are not necessarily to scale.





Elm Road, Didsbury M20 6XB

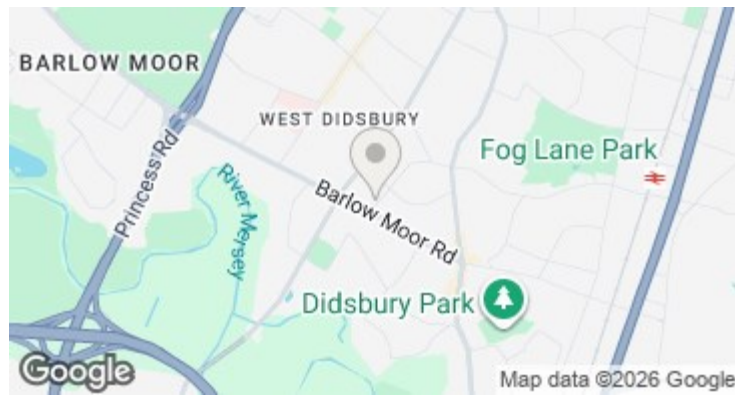
£425,000

The Property

A beautifully presented, larger than average, two double bedroom first floor apartment on one of Didsbury's most sought after, tree lined roads, being just a short stroll from both Didsbury Village and Burton Road. 964 sq ft. The property has a number of noteworthy features including, high ceilings, deep skirting boards, split level entrance hallway with built in storage, wonderful open plan kitchen/dining area, with integrated appliances and walk-in bay window, as well as an additional separate family living room expanding over 17 ft, with large picture window and a period style cast-iron fireplace, two excellent double bedrooms, the master with fitted wardrobes and an en-suite shower room off, tiled family bathroom with white suite. In addition, there is residents' parking, gas central heating. The property is one of only four apartments within the building, with an enviable living space position at the rear with treetop views.

Directions

M20 6XB



- Two impressive double bedrooms
- First floor apartment
- Period features
- Large family bathroom & en-suite
- Private residents parking
- Private entrance
- Ideal Didsbury location
- Open plan kitchen / dining room
- Gas central heating

Postcode - M20 6XB

EPC Rating - C

Floor Area - 964.00 sq ft

Local Authority - Manchester City Council

Council Tax - C

